

G.MILANI S.A.S.

DI TETTONI FABRIZIO & C.

VIA CAVAGLIETTO, 25

28010 - CAVAGLIO D'AGOGNA NO (ITALIA)

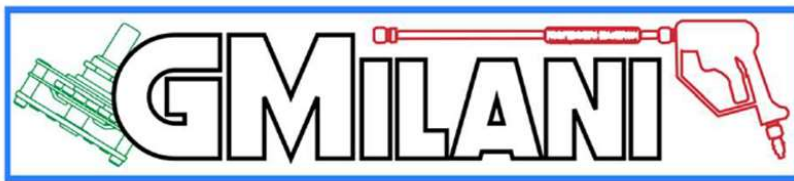
P.IVA: 02626650036

SDI: W7YVJK9

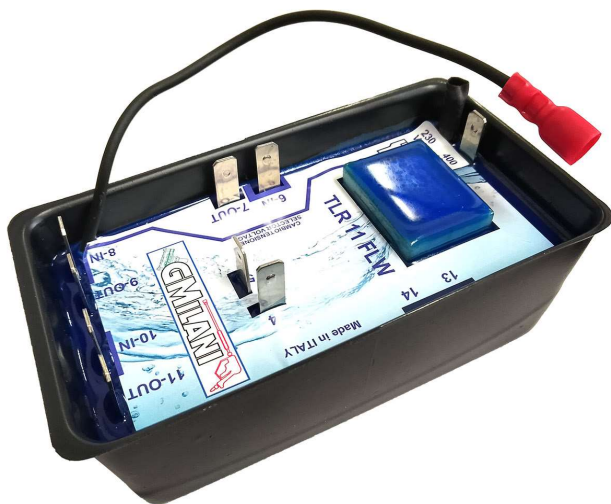
MAIL: INFO@GMILANI.IT

PEC: G.MILANISAS@PEC.IT

TEL: +39.0322.80.68.20



EQUIPMENT FOR COLD WATER PRESSURE WASHERS TLR 11 FLW



Characteristics:

- Power supply 230Vac / 400Vac 50/60Hz
- For three-phase motors up to 7.5Kw – 10Hp
- For single-phase motors up to 5.5Kw – 7.5Hp
- Low voltage pressure switches
- Connections via 6.3mm faston
- Overall dimensions: (L x W x H) 125 x 68 x 45mm
- Weight: 600g

The product was specifically designed for the management and control of cold water pressure washers.

It has the function of a simple timer for the management of the pump motor, with a standard timing set at 7 seconds.

Unlike all other TLR models, the FLW versions do not have the initial TOTALSTOP to bring the system under pressure when the card is powered. The pump will only be activated when the pressure switch inputs are closed.

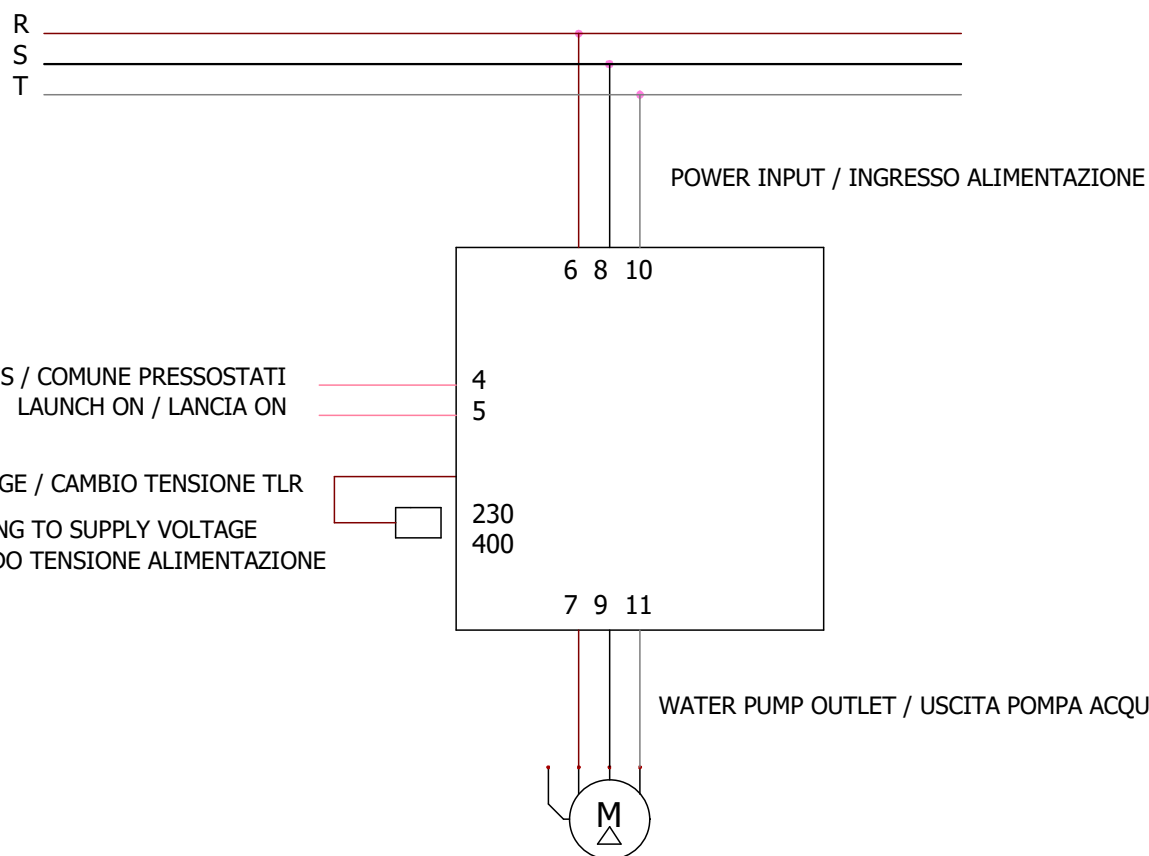
From October 2023, the TLR 11 AF model has been added to the catalog, which will replace and unify the FLW models, improving their characteristics, with the great revolution of eliminating the voltage change.

Operating characteristics:

Pump motor output controlled internally by 3 Relays.

Electronic card drowned in epoxy resin to eliminate the problem of dust and humidity.

MADE IN ITALY



M1 -Water pump outlet / Uscita pompa acqua

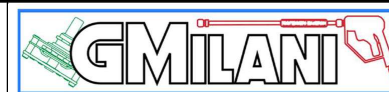
In single phase do not use 10-11 / In monofase non usare 10-11

TLR11FLW

REV. DATE

DESIGNED
G.Milani

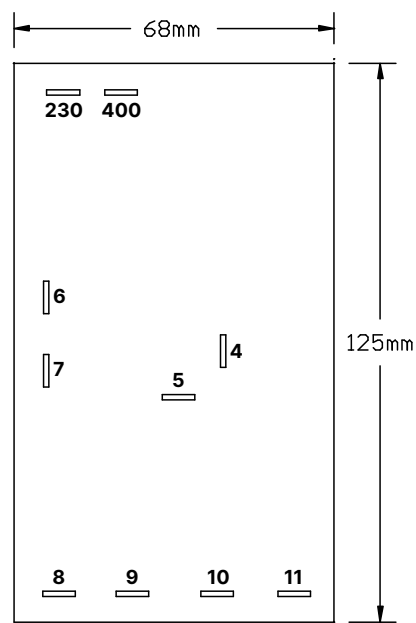
**G.MILANI S.a.s
DI TETTONI FABRIZIO & C.**
VIA CAVAGLIETTO, 25
28010 - CAVAGLIO d'AGOGNA NO (ITALIA)
mail: **INFO@GMILANI.IT**
tel: **+39.0322.80.68.20**



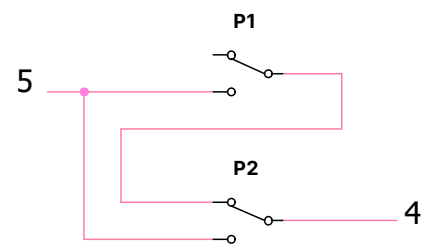
SCHEME

CONTRACT:

P1 - Pressure switch generally mounted on the pump / Pressostato generalmente monatato su Pompa
P2 - Pressure switch generally mounted on Bypass Valve / Pressostato generalmente montato su Valvola Bypass



Example of pressure switch connection
Esempio collegamento pressostati

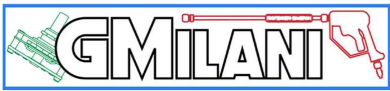


TLR11FLW

REV. DATE

DESIGNED
G.Milani

G.MILANI S.a.s
DI TETTONI FABRIZIO & C.
VIA CAVAGLIETTO, 25
28010 - CAVAGLIO d'AGOGNA NO (ITALIA)
mail: **INFO@GMILANI.IT**
tel: **+39.0322.80.68.20**



SCHEME

CONTRACT: