

G.MILANI S.A.S.

DI TETTONI FABRIZIO & C.

VIA CAVAGLIETTO, 25

28010 - CAVAGLIO D'AGOGNA NO (ITALIA)

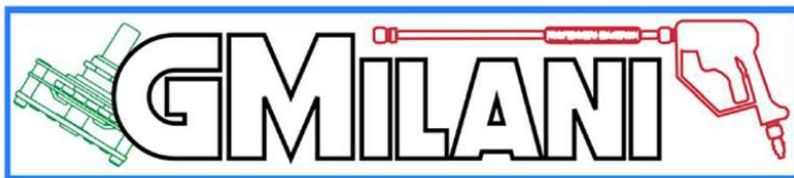
P.IVA: 02626650036

SDI: W7YVJK9

MAIL: INFO@GMILANI.IT

PEC: G.MILANISAS@PEC.IT

TEL: +39.0322.80.68.20



EQUIPMENT FOR HOT WATER PRESSURE CLEANERS TLR 2



Characteristics:

- Three-phase power supply 400Vac 50/60Hz
- Suitable for engines up to 4Kw – 5Hp
- Low voltage pressure switches
- Connections via 6.3mm faston
- Overall dimensions: (L x W x H) 85 x 68 x 47mm
- Weight: 440g

The product was specifically designed for the management and control of pressure washers with three-phase power supply at 400Vac 50/60Hz, equipped with a boiler for heating hot water.

The main function, called TOTALSTOP, manages the switching off and on of the pump motor with a standard timing set at 8 seconds.

The TLR 2 was created to satisfy the request for an economical device, capable of controlling the direct switching on of the three-phase pump motor by interrupting 2 phases, or to control an external contactor.

The device is equipped with a relay with clean NO contacts inside, generally used for the delayed switching on of the diesel solenoid valve by 3 seconds.

The TLR is equipped with a direct input to be used (optional) to be able to turn off the equipment, connecting in series for example: a general switch, emergency mushroom, motor thermal probe etc...

Operating characteristics:

Pump motor output controlled internally by 2 Relays.

Separate power input for turning off the equipment.

Electronic board drowned in epoxy resin to eliminate the problem of dust and humidity.

MADE IN ITALY

R
S
T

POWER INPUT / INGRESSO ALIMENTAZIONE

COMMON PRESSURE SWITCHES / COMUNE PRESSOSTATI
LAUNCH ON / LANCIA ON

WATER PUMP OUTLET / USCITA POMPA ACQUA

CONTACT NO X ACTIVATION / CONTATTO NO X ATTIVAZIONE
DIESEL SOLENOID VALVE / ELETTROVALVOLA GASOLIO

M1 -Water pump outlet / Uscita pompa acqua
EV1 - Diesel solenoid valve / Elettrovalvola Gasolio

TLR2

REV. DATE

DESIGNED
G.Milani

G.MILANI S.a.s
DI TETTONI FABRIZIO & C.
VIA CAVAGLIETTO, 25
28010 - CAVAGLIO d'AGOGNA NO (ITALIA)
mail: **INFO@GMILANI.IT**
tel: **+39.0322.80.68.20**

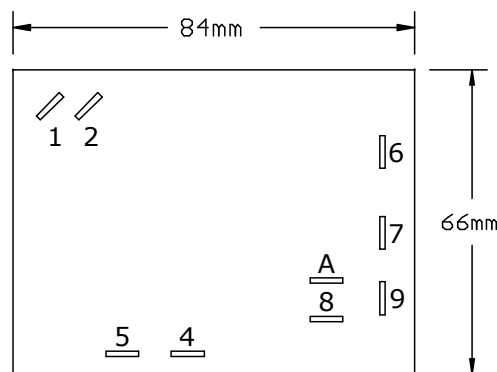


SCHEME

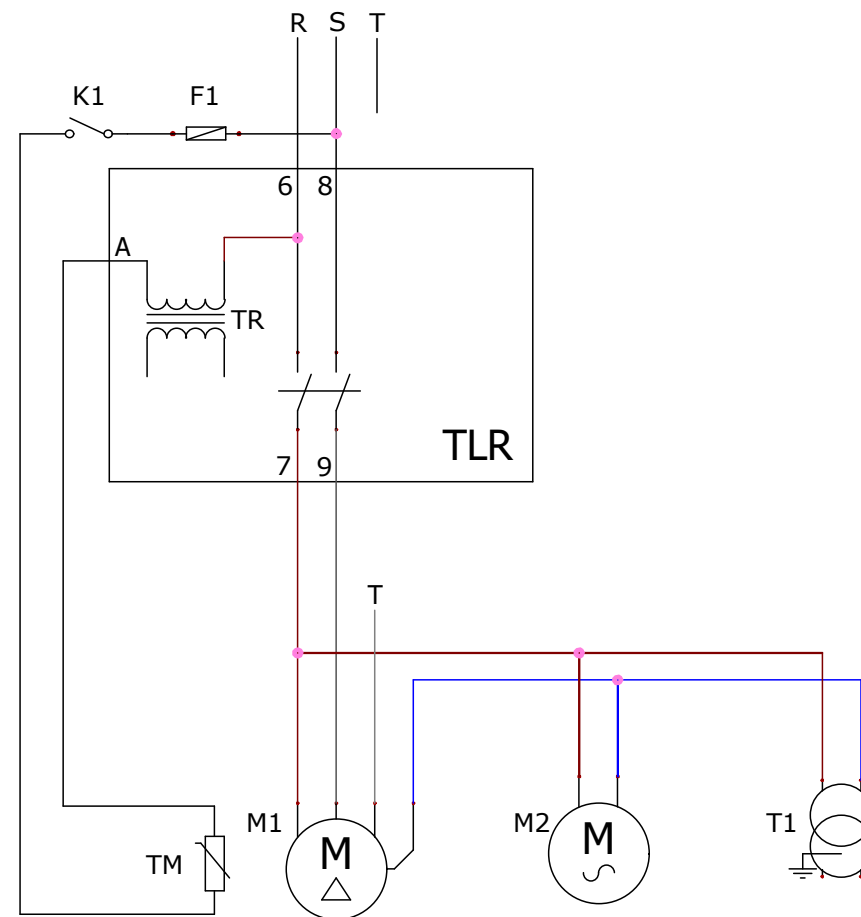
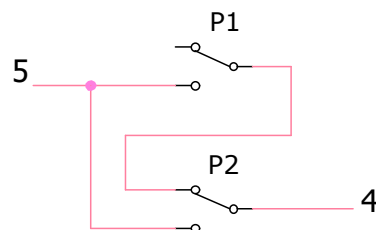
CONTRACT:

T1 - Spark high voltage transformer / Trasformatore alta tensione scintilla
 M1 - Motor Pump / Motore Pompa
 M2 - Smoke fan motor / Motore ventola fumi
 P1 - Pressure switch generally mounted on the pump / Pressostato generalmente monatoato su Pompa
 P2 - Pressure switch generally mounted on Bypass Valve / Pressostato generalmente montato su Valvola Bypass
 TR- Internal TLR power supply / Alimentazione interna TLR
 F1 - Fuse / Fusibile
 K1 - Main switch / Interruttore generale
 TM - motor safety thermal switch / Interruttore termica sicurezza motore

Example of Fan Motor and Spark Transformer connection
 Esempio collegamento Motore Ventola e Trasformatore Scintilla



Example of pressure switch connection
 Esempio collegamento pressostati

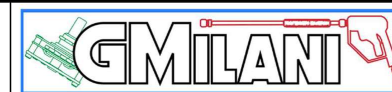


TLR2

REV. DATE

DESIGNED
G.Milani

G.MILANI S.a.s
DI TETTONI FABRIZIO & C.
 VIA CAVAGLIETTO, 25
 28010 - CAVAGLIO d'AGOGNA NO (ITALIA)
 mail: INFO@GMILANI.IT
 tel: +39.0322.80.68.20



SCHEME

CONTRACT: